



New Construction

PROGRESS UPDATE
September 2023

Southeast Pre K-12 School



PROJECT SUMMARY

Site Development & Landscaping

September 2023 Progress

- Site
- Utilities
 - Gas Service Line Installation – 100%
 - Gas House Line Installation – 100%
 - Site Light Poles Installation – 100%
 - Pour Generator and Chiller Pads – 100%
 - Connect Gas House Line to Gas Service Line –100%

Upcoming Progress

- N/A



PROJECT SUMMARY

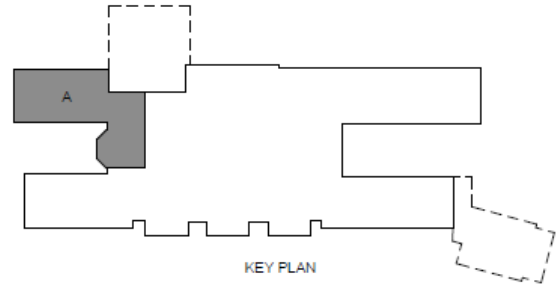
Area A

September 2023 Progress

- Set Hollow Metal Frames– 95%
- Temp Roof Dry-in– 100%
- Cavity Insulation and Brick Veneer– 100%
- Set Windows– 85%
- Fire Protection Rough-in– 80%
- Hang Cable Trays– 90%

Upcoming Progress

- Set Hollow Metal Frames
- Hang Cable Trays
- Hang Wall Board
- Paint CMU Walls

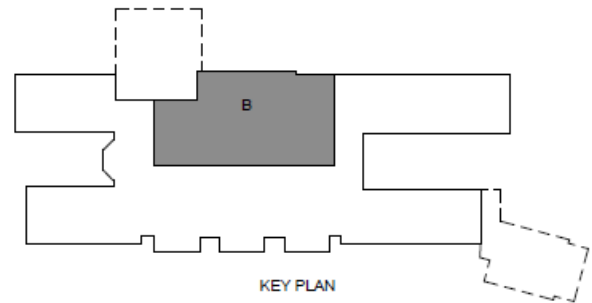


PROJECT SUMMARY

Area B

September 2023 Progress

- Pour Slab on Grade– 100%
- Structural Steel – 85%
- Chilled Water Piping– 70%
- Non-bearing CMU Walls– 95%



Upcoming Progress

- Continue Setting Steel
- Continue Chilled Water Piping
- Prep first floor CMU for Paint
- Cavity Insulation and Brick Veneer

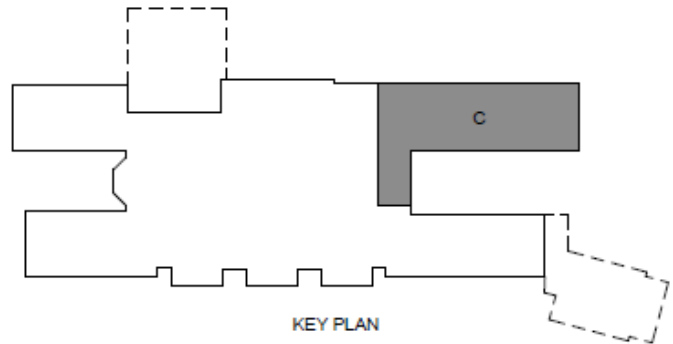


PROJECT SUMMARY

Area C

September 2023 Progress

- Second Floor Interior Metal Framing– 95%
- Temp Roof Dry-in– 100%
- VAV Boxes Installation– 100%
- MEP Piping– 40%



Upcoming Progress

- Continue MEP Piping
- Spray Foam Monitor
- Set Clerestory Windows
- Cavity Insulation and Brick Veneer



PROJECT SUMMARY

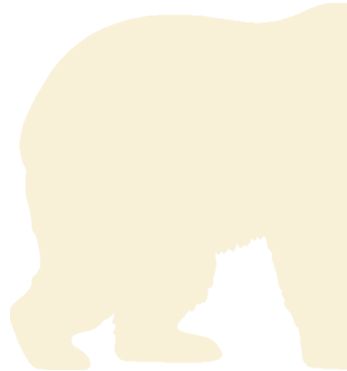
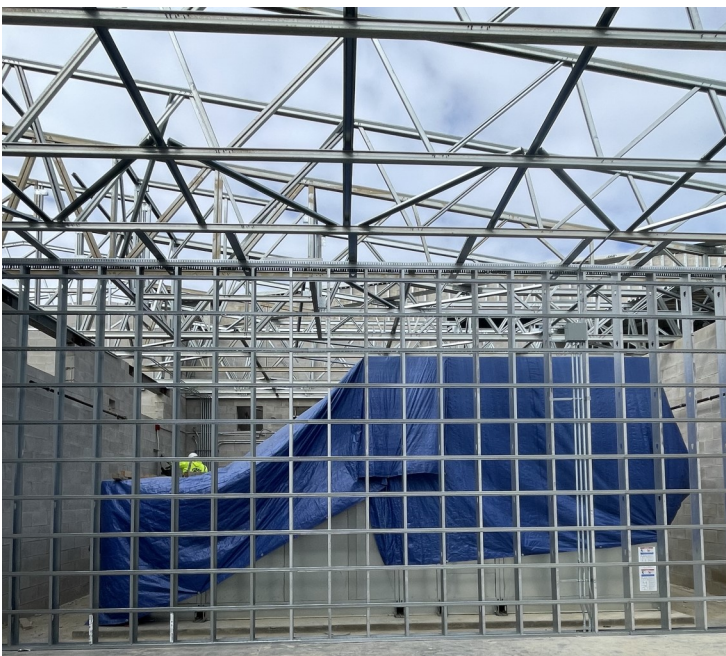
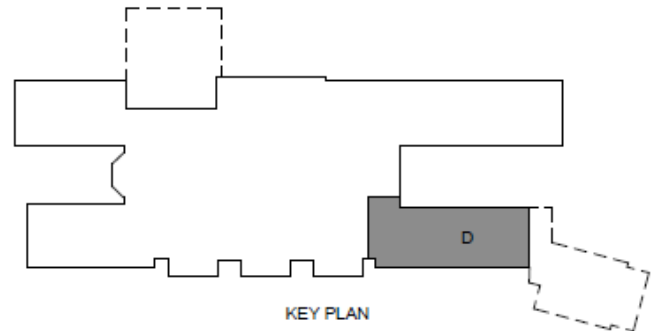
Area D

September 2023 Progress

- Exterior Bearing CMU– 100%
- Set Trusses– 100%
- MEP Rough – In– 20%
- MEP Piping– 20%
- Set HVAC Units– 100%

Upcoming Progress

- MEP Rough – In
- Set Metal Deck
- MEP Piping



PROJECT SUMMARY

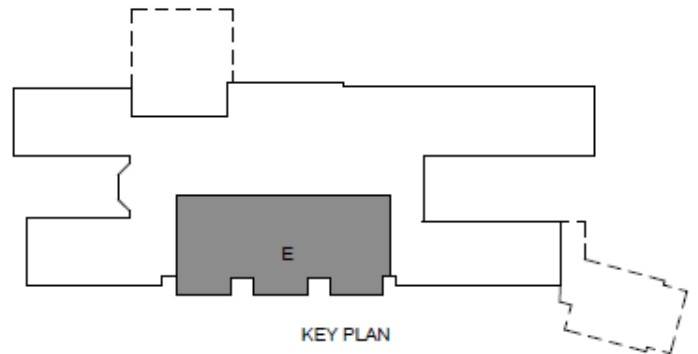
Area E

September 2023 Progress

- CMU to Bearing– 100%
- Set Structural Steel – 100%
- Set Bowstrings Metal Deck– 100%
- Set HS Gym Metal Deck– 100%
- Bowstrings Insulation– 90%
- Set Trusses– 35%
- Second Floor MEP Overhead Rough-in–40%

Upcoming Progress

- Continue CMU to Bearing
- Continue MEP Overhead Rough-in
- Pour Partial Admins Slab on Grade
- Set Trusses

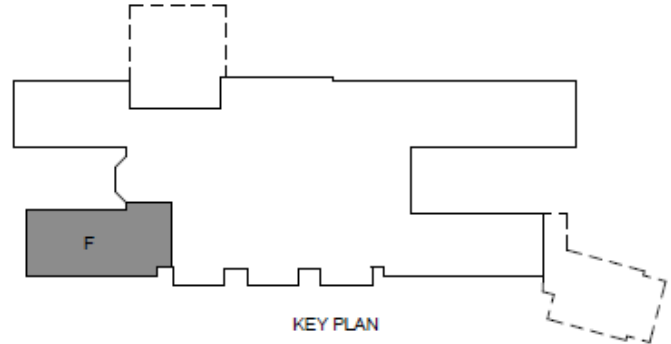


PROJECT SUMMARY

Area F

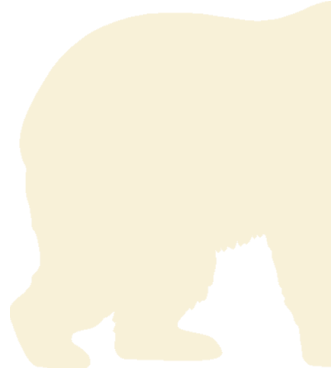
September 2023 Progress

- Temp Roof Dry-in- 100%
- Cavity Insulation and Brick Veneer- 100%
- Set Windows- 70%



Upcoming Progress

- Hang Wall Board
- Paint CMU Walls

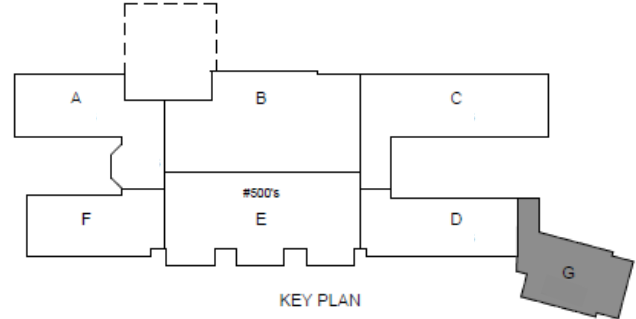


PROJECT SUMMARY

Area G

September 2023 Progress

- Set Trusses– 100%
- MEP Rough– In– 10%
- MEP Piping– 10%



Upcoming Progress

- Set Metal Deck
- MEP Piping
- MEP Rough-In

